



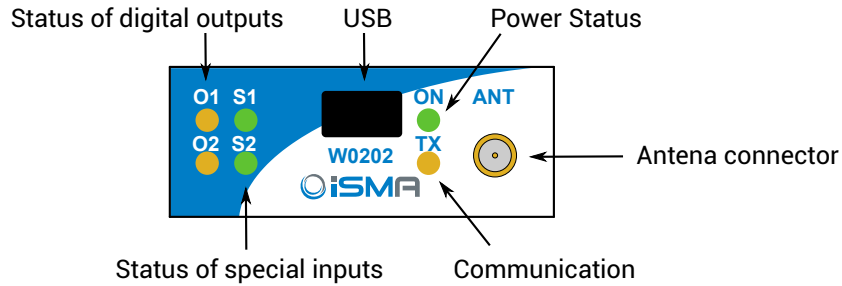
ISMA
ISMA-B-W0202



version 1.1

SPECIFICATION	
Supply	DC: 24V ± 20%, 2W; AC: 24V ± 20%, 3VA
Special inputs	2 - voltage measurement 0-10V, resistance, dry contact, fast counter 50/100Hz
Digital outputs	2 - relay output; Resistive load max. 3A@250VAC, 3A@30VDC Inductive load max. 75VA@230VAC, 30W@30VDC
Radio	Frequency: 868MHz, Transmission Power: +20 dBm (100mW)
Interface	RS485, MODBUS up to 128 devices on the bus
Address	Setting by configuration software from 1 to 247
Baudrate	Setting by configuration software from 2400 to 115200 bps
Ingress Protection Rating	IP40 - for indoor installation
Temperature	Operating: -10°C to +50°C; Storage: -40°C to +85°C
Relative humidity	5 to 95% RH (without condensation)
Connectors	Separable, max 2.5mm ² , Mini USB
Dimension	90mm x 56mm x 17mm; DIN rail mounting (DIN EN 50022 norm)
Housing material	Plastic, self-extinguishing PC/ABS

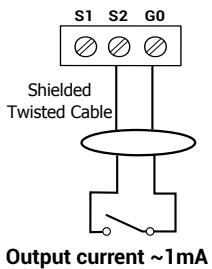
TOP PANEL



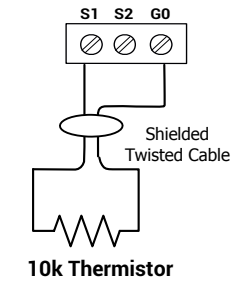
SPECIAL INPUTS

COMMUNICATION

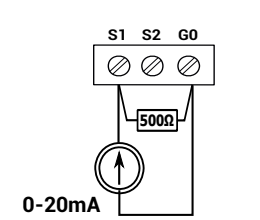
Dry Contact Input



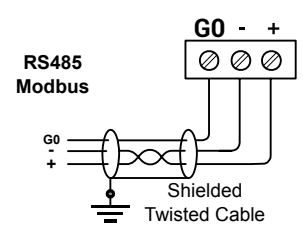
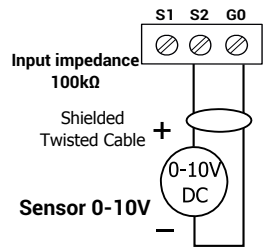
Temp. measurement



Current measurement

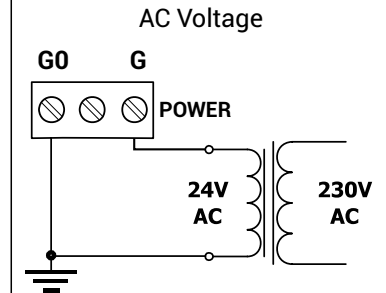
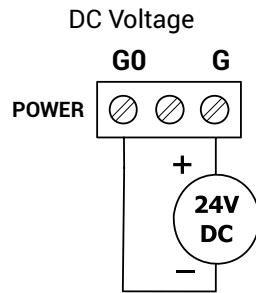
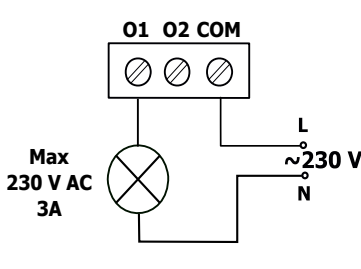
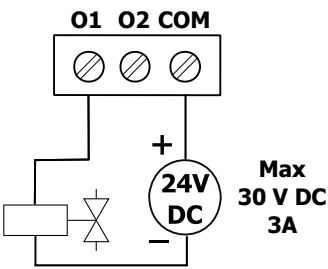


Voltage measurement



DIGITAL OUTPUTS

POWER SUPPLY



WARNING

- Note, an incorrect wiring of this product can damage it and lead to other hazards. Make sure the product has been correctly wired before turning the power ON.
- Before wiring or removing / mounting the product, be sure to turn the power OFF. Failure to do so might cause electric shock.
- Do not touch electrically charged parts such as the power terminals. Doing so might cause electric shock.
- Do not disassemble the product. Doing so might cause electric shock or faulty operation.
- Use the product within the operating ranges recommended in the specification (temperature, humidity, voltage, shock, mounting direction, atmosphere etc.). Failure to do so might cause fire or faulty operation.
- Firmly tighten the wires to the terminal. Insufficient tightening of the wires to the terminal might cause fire.

TERMINALS OF THE DEVICE

